

HAVEN'T YET STARTED?

It's not too late!

October 2 is the beginning of the last 90 days

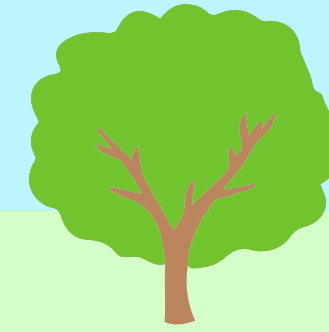
Start Driving!



PICK YOUR PACE 2017

Decide what is best for your practice

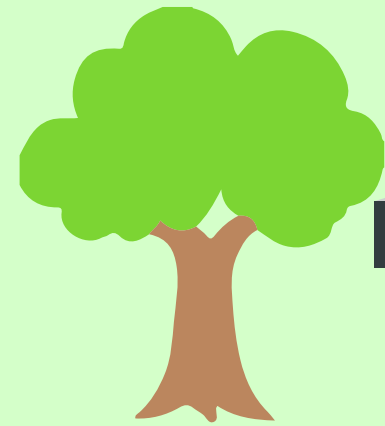
- Don't Participate
- Test - submit something
- Partial Year Participation - submit 90 days of data
- Full Year Participation - submit all of 2017 data



REVIEW THE MENU 2017

Pick your Quality Measures and Improvement Activities

- Find the quality measures that work for you
- Decide on an Improvement Activity
- Have a plan of action for the activity chosen



EDUCATION 2017 & 2018

- Meet with your Clinician and staff so they understand their part in the process
- Educate them on MIPS Quality, IA, and ACI categories
- What are they, what do they mean to your practice
- Stress Quality over Quantity



GET YOUR TOOLS 2017 & 2018

- Choose your submission mechanisms
- Evaluate your practice: Review the ACI measures to ensure compliance & implement what are you already documenting that you can report on for Quality
- Incorporate the needed actions into the current processes
- Implement systems to manage costs-to-performance

FILL THE GAPS 2017 & 2018

- Is any infrastructure or additional technology needed
- Doing claims submission for Quality?
 - Add the codes to the system
 - Ensure the process for billing is in place
- Using a Registry to report?
 - How do they want their data?



EVALUATE YOUR PROGRESS

- Run and review your ACI and Quality Measure reports
- Review workflow based on the report outcomes
- Monitor the data to ensure that you are meeting your goals
- Use the data that has the most positive results to determine the best 90 days to report



ENJOY YOUR UPWARD ADJUSTMENT 2019

- Experience the possible upward adjustment in 2019 and beyond
- Be better prepared for future years

